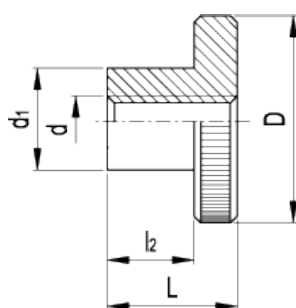
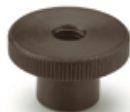


DIN 466

Knurled grip knobs



american unit
metric unit

Elesa-Gantergriff		Main dimensions				Mounting hole	Weight
Code	Description	D	L	d ₁	l ₂	d	lbs g
GN.29501	DIN 466-M3	0.47 12	0.3 7.5	0.24 6	0.2 5	- M3	0.007 3
GN.29511	DIN 466-M4	0.63 16	0.37 9.5	0.31 8	0.24 6	- M4	0.015 7
GN.29521	DIN 466-M5	0.79 20	0.45 11.5	0.39 10	0.3 7.5	- M5	0.029 13
GN.29531	DIN 466-M6	0.94 24	0.59 15	0.47 12	0.39 10	- M6	0.051 23
GN.29541	DIN 466-M8	1.18 30	0.71 18	0.63 16	0.47 12	- M8	0.097 44
GN.29551	DIN 466-M10	1.42 36	0.91 23	0.79 20	0.59 15	- M10	0.192 87
GN.29561	DIN 466-M12	1.57 40	0.98 25	0.87 22	0.59 15	- M12	0.26 118

Material
Turned black-oxide steel.

Assembly
Hub, tapped through hole.