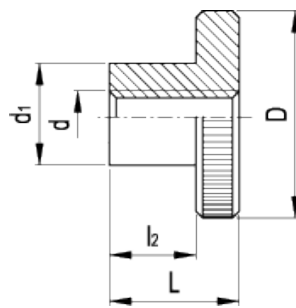


DIN 466-NI

Knurled grip knobs



american unit
metric unit

Elesa-Gantergriff		Main dimensions				Mounting hole	Weight
Code	Description	D	L	d ₁	l ₂	d	lbs g
GN.29581	DIN 466-M4-NI	0.63 16	0.37 9.5	0.31 8	0.24 6	- M4	0.015 7
GN.29582	DIN 466-M5-NI	0.79 20	0.45 11.5	0.39 10	0.3 7.5	- M5	0.029 13
GN.29583	DIN 466-M6-NI	0.94 24	0.59 15	0.47 12	0.39 10	- M6	0.051 23
GN.29584	DIN 466-M8-NI	1.18 30	0.71 18	0.63 16	0.47 12	- M8	0.097 44

Material

AISI 303 stainless steel, sandblasted matte finish.

Assembly

Hub, tapped through hole.

Features and applications

AISI 303 stainless steel, thanks to its high resistance to corrosion, allows the application of these knobs on machines and equipment in those sectors where laws or particular hygienic, climatic and environmental factors make it mandatory to use corrosion resistant materials.



STANDARD MACHINE ELEMENTS WORLDWIDE

ELESA-GANTER models all rights reserved in accordance with the law. Always mention the source when reproducing our drawings.