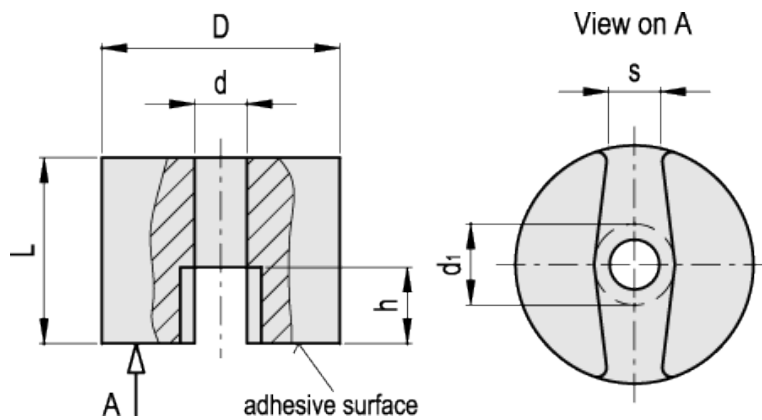


Cylindric retaining magnets with pass-through hole

AN



Elesa Standards		Main dimensions						Nominal adhesive forces *	Weight
Code	Description	D	L	d	d ₁ max. Ø screw head	h	s	[N]	g
502801	RMQ-AN-13	13	10	4.2	7	4.5	2	7	6
502811	RMQ-AN-19	19.1	12.7	4.8	8.7	6.5	5.7	19	23
502821	RMQ-AN-25	25.4	20	4.5	8.5	8	5.6	40	71
502831	RMQ-AN-32	31.8	25.4	7.1	10	12.7	7.9	66	132

* The values of the nominal adhesive forces are approximate and refer to magnetic properties of laboratory samples.

Standard execution

(AlNiCo) Aluminium-nickel-cobalt magnet, resistant to temperatures up to 280°C.

Red lacquering, resistant to temperatures up to 180°C.

[Technical data.](#)

Features and applications

RMQ cylindric retaining magnets are unshielded, cast, magnetic systems with high performances and moderate overall dimensions. They have a split adhesive surface.

To ensure that the adhesive force is not impaired, the fixing screws must be made out of non-magnetic material.

For easier handling and for avoiding demagnetisation, these magnets have an iron plate on their adhesive surface.