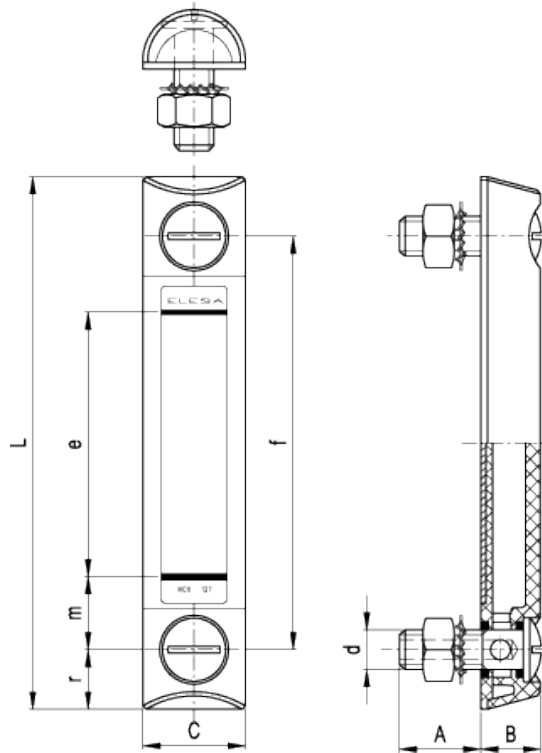


HCX-BW-SST

Column level indicators for hot water



ELESA Original design



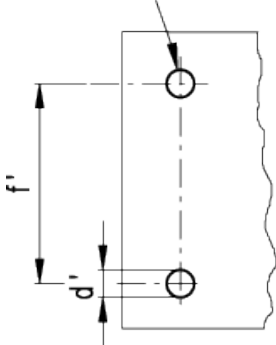
american unit
metric unit

Elesa Standards		Main dimensions									Weight
Code	Description	f	d	A	B	C	L	e	m	r	lbs g
11345	HCX.76-BW-SST-M10	2.99 76	- M10	0.87 22	0.63 16	1.06 27	4.21 107	1.57 40	0.71 18	0.61 15.5	0.192 87
11355	HCX.127-BW-SST-M12	5 127	- M12	0.91 23	0.71 18	1.22 31	6.34 161	3.15 80	0.91 23	0.67 17	0.304 138
11365	HCX.254-BW-SST-M12	10 254	- M12	0.83 21	0.71 18	1.38 35	11.46 291	7.99 203	1.02 26	0.73 18.5	0.407 185

Elesa Standards		Main dimensions										Weight
Code	Description	f	d	A	B	C	L	e	m	r	lbs g	

Drilling template

Holes without burrs and chamfer



Drilling and installation data			
Description	d' _{-0.008}	f' _{±0.008}	Maximum tightening torque [ft·lbf] [Nm]
HCX.76	0.41 10.5	2.99 76	6 8
HCX.127	0.49 12.5	5 127	6 8
HCX.254	0.49 12.5	10 254	6 8

Material

Transparent polyamide based (PA-T) technopolymer. Highly resistant to shocks, solvents, oils with additives, aliphatic and aromatic hydrocarbons, petrol, naphtha, phosphoric esters. Avoid contact with alcohol or detergents containing alcohol. The special technopolymer used for HCX.INOX-BW column level indicator allows to use it even in circuits working with very hot water and prevents milk effect on the transparent surface.

Screws, nuts and washers

AISI 303 stainless steel screws, AISI 304 stainless steel nuts and washers.

Packing rings

FKM (type VITON[®], registered trade mark of DuPont Dow Elastomers) O-Ring.

Contrast screen

White lacquered aluminium. The housing, in the appropriate external rear slot, guarantees the best protection from direct contact with fluid, avoiding yellowing effect due to the prolonged action of the fluid at high temperatures. It can be removed before installation to fit marks and words (for example MAX-MIN).

Assembly

- When nuts can be fitted from the inside of the reservoir, by means of the supplied set screws and nuts.
- When nuts cannot be fitted from the inside of the reservoir and the walls are thick enough, by means of the supplied set screws, without nuts, by tapping the two holes in the reservoir walls.
To ensure the best sealing of the O-rings it is recommended to apply the maximum torque on the nuts as reported in the table and a roughness of the gasket application surface Ra = 3 µm.

Maximum continuous working temperature

175°F (80°C) with peaks of 190°F (90°C).

Features and performances

Assembled using ultrasound welding to guarantee a perfect seal. Entirely in transparent material: maximum fluid level visibility even from side positions. Visibility magnified by lens effect.

Technical data

In laboratory tests carried out with mineral oil for hydraulic systems type CB68 (according to ISO 3498) with gradually increasing pressure, at 73°F (23°C), the weld stood up as follows:

- HCX.76-INOX-BW 10 bar
- HCX.127-INOX-BW 10 bar
- HCX.254-INOX-BW 10 bar

In any case we suggest to verify the suitability of the product under the actual working conditions. If you need to use the indicator with other fluids and under different pressure and temperatures conditions, please contact ELESA Technical Department or carry out tests in order to guarantee a proper use.

